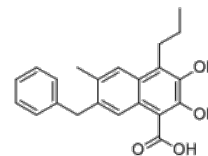


Product Name : FX-11
Cat. No. : PC-62049
CAS No. : 213971-34-7
Molecular Formula : C₂₂H₂₂O₄
Molecular Weight : 350.414
Target : Lactate Dehydrogenase (LDH)
Solubility : DMSO: 250 mg/mL



Biological Activity

FX-11 (LDHA inhibitor FX11) is a cell permeable, selective, reversible, NADH competitive inhibitor of lactate dehydrogenase A (**LDHA**) with K_i of 50 nM (LDHA subunit M), less potent for LDHB or pLDH.

FX-11 reduces ATP levels and induces oxygen consumption, ROS production and cell death.

FX-11 inhibits the progression of sizable human lymphoma and pancreatic cancer xenografts, and induces lymphoma regression in combination with FK886.

References

Le A, et al. *Proc Natl Acad Sci U S A*. 2010 Feb 2;107(5):2037-42.

Deck LM, et al. *J Med Chem*. 1998 Sep 24;41(20):3879-87.

Yu Y, et al. *Biochem Pharmacol*. 2001 Jul 1;62(1):81-9.

Caution: Product has not been fully validated for medical applications. Lab Use Only!

E-mail: tech@probechem.com